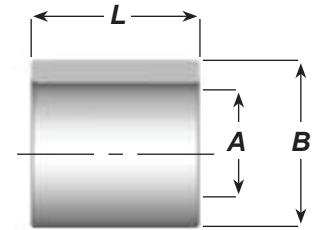


STRAIGHT BUSHINGS

STEEL

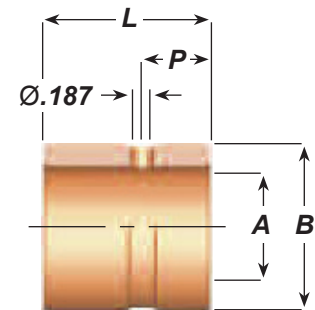
Catalog Number	Nominal I.D.	A I.D. +.0005 -.0000	B O.D. +.0005 -.0000	L -.015 -.030
2500	3/4	0.751	1.126	7/8
2501	3/4	0.751	1.126	1-3/8
2502	7/8	0.876	1.251	1-3/8
2503	1"	1.001	1.376	1-3/8
2504	1-1/4	1.251	1.626	1-3/8
2505	1-1/4	1.251	1.626	1-7/8
2506	1-1/2	1.501	2.001	1-3/8
2507	1-1/2	1.501	2.001	1-7/8
2508	2"	2.001	2.501	3-7/8
2509	2-1/2	2.501	3.251	4-7/8
2510	3	3.005	3.751	4-7/8



STRAIGHT BUSHINGS

SOLID BRONZE

Catalog Number	Nominal I.D.	A I.D.	B O.D.	P	L
		+ .0005 - .0000	+ .0005 - .0000		- .015 - .030
2500SB	3/4	0.751	1.126	*	7/8
2501SB	3/4	0.751	1.126	0.56	1-3/8
2502SB	7/8	0.876	1.251	0.56	1-3/8
2503SB	1"	1.001	1.376	0.56	1-3/8
2504SB	1-1/4	1.251	1.626	0.56	1-3/8
2505SB	1-1/4	1.251	1.626	0.56	1-7/8
2506SB	1-1/2	1.501	2.001	0.56	1-3/8
2507SB	1-1/2	1.501	2.001	0.56	1-7/8
2508SB	2"	2.001	2.501	1.56	3-7/8
2509SB	2.5"	2.501	3.251	0.56	4 -7/8
2510SB	3"	3.001	3.751	1.56	4 -7/8



► No grease groove or hole on 7/8 long bushings.