

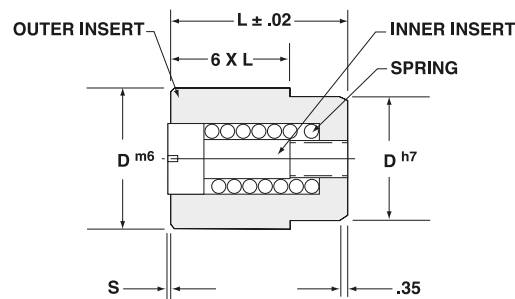
FRONT-REMOVABLE DATE STAMPS

ECONOMY SERIES "E"

- > Material: 420 Stainless; 1.4021;46Hrc+/- 2
- > Provides part traceability
- > Maximum working Temperature: 300F
- > Markings are Laser etched.
- > Insert changes can be done from parting line
- > Press fit installation required Interchangeable with DME Front
- > Removable or Progressive C-series



D	L	12 Months w/arrow	12 Months w arrow/year	Years/ arrow**	Days/ arrow	Shifts/ arrow	Numeral 0-9	Blank/ arrow
4	8	M408	M04 x __	A04 x __	DA04	SH04		BL408
5	8	M508	M05 x __	A05 x __	DA05	SH05		BL508
6	8	M608	M06 x __	A06 x __	DA06	SH06	FOR0006	BL608
8	10	M810	M08 x __	A08 x __	DA08	SH08	FOR0008	BL810
10	12	M1012	M10 x __	A10 x __	DA10	SH10	FOR0010	BL1012
12	14	M1214	M12 x __	A12 x __	DA12	SH12	FOR0012	BL1214
16	14	M1614	M16 x __	A16 x __	DA16	SH16	FOR0016	BL1614
20	16	M2016	M20 x __	A20 x __	DA20	SH20	FOR0020	BL2016



NOTE: Press fit installation required in mold.

- > * When ordering add the year required to the part number (M05 x 07)
- > **When ordering specify beginning year

REPLACEMENT INSERTS & BODIES

Dimensional Data

D(mm) Dia.	E (mm)	L(mm) Length	S(mm) Etch Depth	Tolerance(mm)	
				m6	h7
4	2,1	8	0.203	+0,12 to +,004	0 to -,012
5	3,1	8	0.203	+0,12 to +,004	0 to -,012
6	3,1	8	0.203	+0,12 to +,004	0 to -,012
8	4,4	10	0.254	+0,15 to +,006	0 to -,015
10	5,2	12	0.356	+0,15 to +,006	0 to -,015
12	6,2	14	0.356	+0,18 to +,007	0 to -,018
16	8,2	14	0.356	+0,18 to +,007	0 to -,018
20	11	16	0.356	+0,21 to +,008	0 to ,021

Replacement Inserts (with springs)

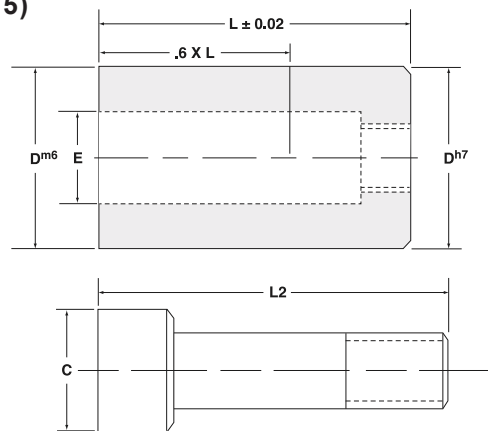
Arrow Only	Arrow & Year*	C	L2
AR04	AY04	2,1	8
AR05	AY05	3,1	8
AR06	AY06	3,1	8
AR08	AY08	4,4	10
AR10	AY10	5,2	12
AR12	AY12	6,2	14
AR16	AY16	8,2	14
AR20	AY20	11	16

REPLACEMENT BODIES

D	L	12 Months	Days	Shifts	Blank
4	8	MB04	DB04	SB04	BL04
5	8	MB05	DB05	SB05	BL05
6	8	MB06	DB06	SB06	BL06
8	10	MB08	DB08	SB08	BL08
10	12	MB10	DB10	SB10	BL10
12	14	MB12	DB12	SB12	BL12
16	14	MB16	DB16	SB16	BL16
20	16	MB20	DB20	SB20	BL20

Replacement Springs (pkg of 5)

D(mm) Diameter	Cat. Number
4	RS04
5	RS05
6	RS06
8	RS08
10	RS10
12	RS12
16	RS16
20	RS20



NOTE: Press fit installation required in mold.

- > * When ordering add the year required to the part number