

DUAL RING DATE STAMPS

Dual-Ring Mold Dating Insert

Offers the Ultimate in Date Insertion Flexibility

Patented Indexable Mold Date Insert Technology

The Dual-Ring Mold Dating Insert features a date insert valid for six years. and is based on Indexable Mold Date Insert technology.

The Dual-Ring Insert eliminates the need to install two date inserts or change the inner insert each year. This easy-to-use indexable insert provides the flexibility you need to keep your mold dating current, especially as the lifetime of molds becomes shorter.

- > Outer ring: 12 months, months 1 through 12
- > Inner ring: 6 years + arrow (arrow points to month)
- > Center insert: arrow (points to year & adjusts position of both arrows)

Offers the Ultimate in Date Insertion Flexibility

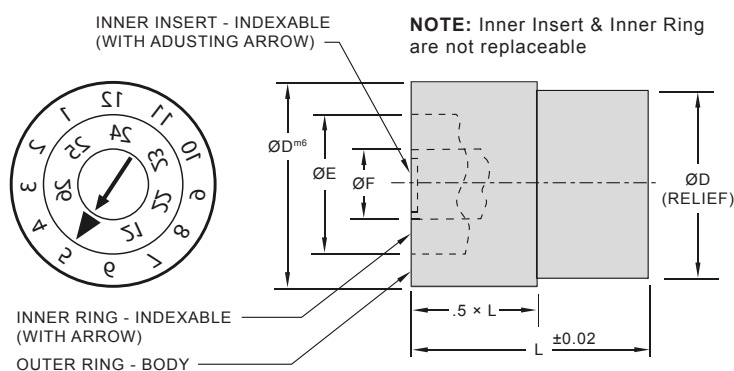
- > Double indexable: both arrows independently “click into position”
- > Change positions easily with only a screwdriver using arrow in inner insert
- > Turn clockwise to change “year” arrow (6 years)
- > Turn counter-clockwise to change “month” arrow (12 months)
- > **All inserts remain flush when rotated**
- > Dual-Ring Inserts may be interchanged for the 20mm, 16mm, 10mm, 8mm to 6mm diameter Indexable and Front Removable inserts



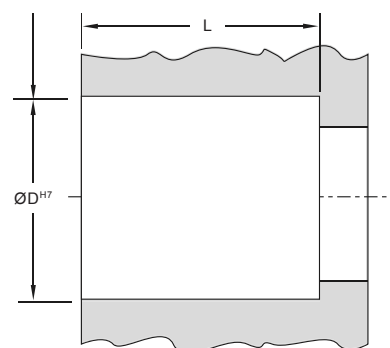
Patent Pending

Installation and Meaning

- > Press-fit installation required
- > Maintain a close tolerance press fit. Too loose a fit could allow the insert to move out of position, while too tight a press fit might prevent the inner insert and inner ring from rotating when required
- > Accurately measure the $\varnothing D$ for each part and machine $\varnothing G$ hole to provide about 0.005mm (0.0002") press fit.



Pocket for installation
(hold pocket depth as required by the application)



Dual Ring Mold Dating Inserts – MD and Assembly

Ø D	TOLERANCE	
	m6	h7
6	+0.004 TO +0.012	0.000 TO -0.012
8	+0.006 TO +0.015	0.000 TO -0.015
10	+0.006 TO +0.015	0.000 TO -0.015
16	+0.007 TO +0.018	0.000 TO -0.018
20	+0.008 TO +0.021	0.000 TO -0.021

INFORMATION KEY:

D = Outside Diameter
 E = Outside Diameter of Inner Ring
 F = Outside Diameter of Inner Insert
 G = Hole Diameter
 L = Length
 Material: Corrosion-resistant Stainless Steel
 Hardness: 53 ± 3 HRC
 Max. T emp: 150°C (300°F)
 Dimensions: All dimensions are in mm, except as noted

ITEM NUMBER	Ø D	Ø E	Ø F	L LENGTH
MD 20 20 *_	20	12.8	6.2	16
MD 16 20 *_	16	10.6	5	14
MD 10 20 *_	10	6.4	3.2	12
MD 08 20 *_	8	5.3	2.5	10
MD 06 20 *_	6	3.8	1.8	10

*When ordering, add digits of engraved year required where asterisks (*_) are shown in item number (e.g., MD 0620_*_: MD 062022; MD 1020_*_: MD 102022).