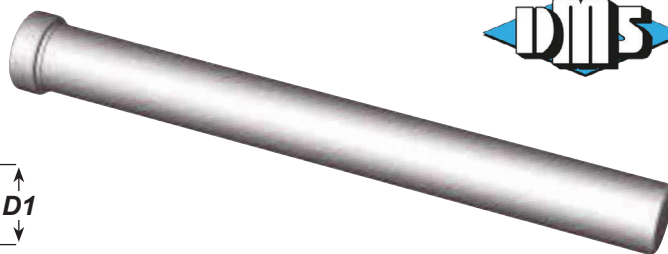
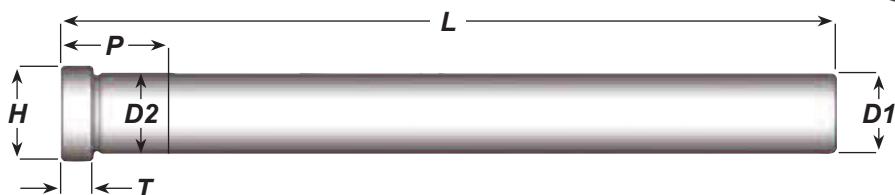


ANGLE PINS

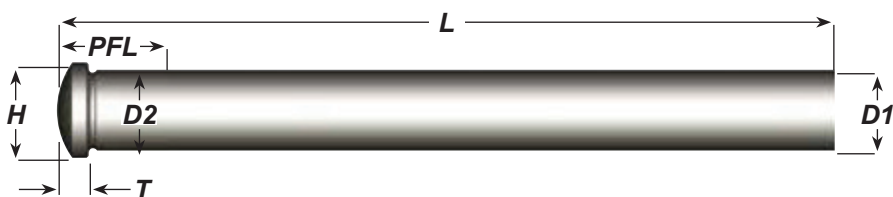


Catalog Number	Diameter	L		PFL	
		+ .12 - .00	+ .000 - .062	+ .000 - .062	+ .000 - .062
AP37L06	3/8		6"		7/8
AP37L10	3/8		10"		1-3/8
AP50L06	1/2		6"		7/8
AP50L10	1/2		10"		1-3/8
AP62L06	5/8		6"		7/8
AP62L10	5/8		10"		1-3/8
AP75L10	3/4		10"		1-3/8

Nominal Diameter	D1 +.0000 -.0005	D2 +.0005 -.0000	H +.000 -.010	T +.000 -.005
3/8	0.374	0.376	0.49	0.25
1/2	0.499	0.501	0.61	0.25
5/8	0.624	0.626	0.74	0.25
3/4	0.749	0.751	0.86	0.25

- ▶ Manufactured from H-13 steel.
- ▶ Surface hardness 65-75 Rc.
- ▶ Core hardness 35-40 Rc.
- ▶ Ground, nitrided and polished.

ANGLE PINS WITH RADIUSED HEADS



Catalog Number	Diameter +.0000 -.0005	L +.50 -.00	H +.000 -.010	T +.000 -.005	D2 +.0000 -.0005	PFL +.00 -.06	R SPH RAD
RAP37L06	0.374	6"	0.500	0.250	0.377	7/8	0.375
RAP37L10	0.374	10"	0.500	0.250	0.377	1-3/8	0.375
RAP50L06	0.499	6"	0.625	0.250	0.502	7/8	0.500
RAP50L10	0.499	10"	0.625	0.250	0.502	1-3/8	0.500
RAP62L06	0.624	6"	0.750	0.250	0.627	7/8	0.625
RAP62L10	0.624	10"	0.750	0.250	0.627	1-3/8	0.625
RAP75L10	0.749	10"	0.875	0.312	0.752	1-3/8	0.750
RAP75L14	0.749	14"	0.875	0.312	0.752	1-3/8	0.750
RAP100L10	0.999	10"	1.125	0.312	1.002	1-3/8	1.00
RAP100L14	0.999	14"	1.125	0.312	1.002	1-3/8	1.00

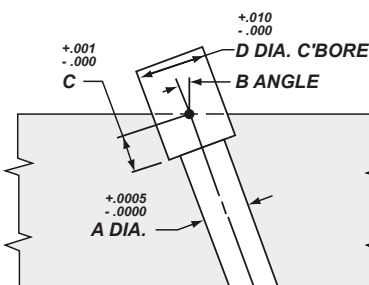
- ▶ Manufactured from H-13 steel.
- ▶ Surface hardness 65-75 Rc.
- ▶ Core hardness 35-40 Rc.
- ▶ Ground, nitrided and polished.

These pins are supplied with a spherical radius premachined on the head, which eliminates angle grinding usually required on the head. To install on a specific angle, use the chart to determine counterbore depth.

INSTALLATION NOTES

Cut angle pin to length as required to obtain required travel on the slide. The angle pin works on angle in clearance hole in slide to push the slide and create travel.

TYPICAL INSTALLATION



Machining Dimensions for Installation

Pin "A" Diameter	Angle	C'bore Depth "C"	C'bore Dia. "D"
.377	10°	0.256	0.562
	15°	0.264	0.562
	20°	0.275	0.562
	25°	0.291	0.562
.502	10°	0.258	0.688
	15°	0.268	0.688
	20°	0.283	0.688
.627	10°	0.260	0.812
	15°	0.273	0.812
	20°	0.291	0.812
.752	10°	0.324	0.938
	15°	0.339	0.938
	20°	0.361	0.938
1.015	10°	0.389	0.938
	15°	0.328	1.188
	20°	0.348	1.188
	25°	0.377	1.188
	25°	0.415	1.188

- ▶ Note: "A" Dimension specified will provide approximately .001" clearance with D2 press fit.