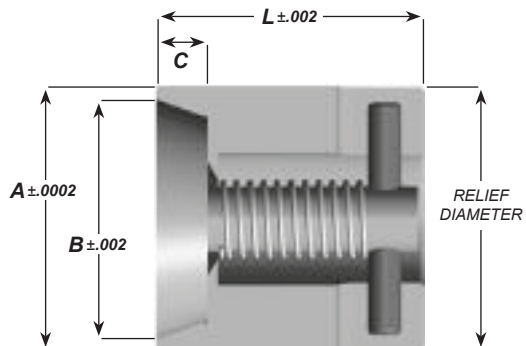




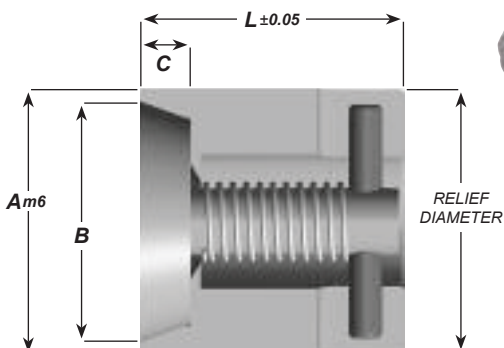
AIR POPPETS STANDARD

> Designed to assist in breaking the vacuum created when molding deep molded parts or thin walled parts such as flower pots, garbage cans and containers.

> The valve and body are made from hard Stainless Steel 45-50 HRC.

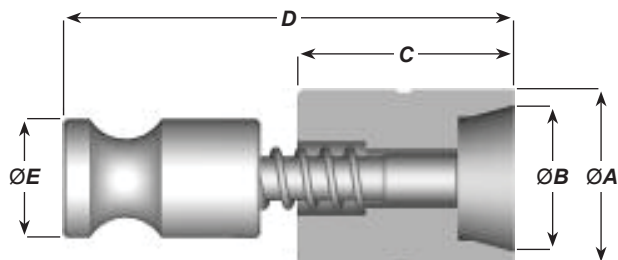


INCH					
Cat. No.	Nominal I.D.	A	B	L	C
AE025	1/4	0.251	0.225	0.252	0.05
AE037	3/8	0.376	0.325	0.377	0.07
AE050	1/2	0.501	0.437	0.502	0.10
AE062	5/8	0.626	0.562	0.627	0.13
AE075	3/4	0.751	0.656	0.752	0.15
AE100	1"	1.001	0.875	1.002	0.20
AE150	1-1/2	1.501	1.312	1.502	0.30



METRIC					
Cat. No.	Nominal I.D.	A	B	L	C
AE08MM	8	0.315	6.5	12	1,5
AE10MM	10	0.394	8	12	2,0
AE12MM	12	0.472	10	12	2,5
AE16MM	16	0.630	13	20	3
AE20MM	20	0.787	17	20	3,5

PLUNGER-STYLE METRIC



420 Stainless Steel 50-55 HRC.

Cat. No.	A	B	C	D	E
EP-01	8 +0,018 +0,007	6,6	11	24	6
AEP-02	12 +0,018 +0,007	9,7	18	34	8
AEP-03	18 +0,018 +0,007	14,8	22	45,5	12

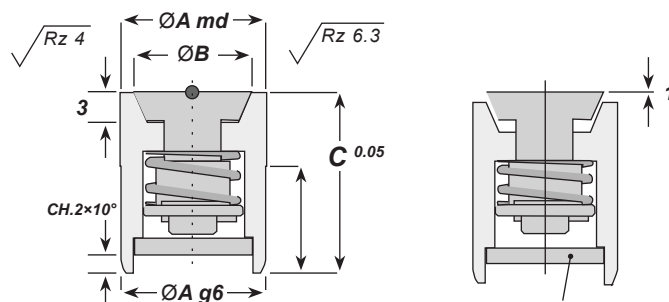
FILTERED METRIC



Catalog Number	A	B	C	E
FV.161320	16	13	20	14
FV.201720	20	17	20	18

> Incorporating a sintered bronze filter ensuring that debris cannot affect the valve's proper function.

> The material is INOX. 1.4304 HRC 48-54.



MAT. SINTERED BRONZE