

E SIDE LOCKS

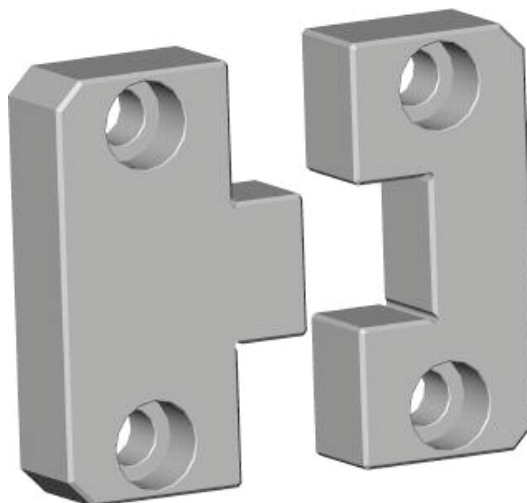
Male half: AISI O2

52-56 Rc

Female half: AISI O2

56-58 Rc

- › Supplied with socket head cap screws.
- › Sold in sets only.



Catalog Number	A +.0000 -.0004	B +.0000 -.0008	C +.0000 -.0008	D +.000 -.002	E	F	G +.010 -.010	H	J	K	L	SHCS
ESL-1.5	1.500	0.870	0.870	0.620	1.180	0.500	0.281	0.281	0.437	0.281	0.190	1/4-20 X 3/4
ESL-2.0	2.000	0.870	0.870	0.620	1.180	0.680	0.375	0.375	0.437	0.375	0.190	1/4-20 X 3/4
ESL-3.0	3.000	1.360	1.370	0.745	1.910	1.000	0.688	0.375	0.688	0.375	0.190	3/8-16 X 1"
ESL-4.0	4.000	1.870	1.870	0.745	2.640	1.375	0.875	0.625	0.875	0.625	0.500	3/8-16 X 1"
ESL-5.0	5.000	1.870	1.870	1.120	2.640	1.750	0.875	0.750	0.875	0.750	0.500	1/2-13 X 1-1/4

