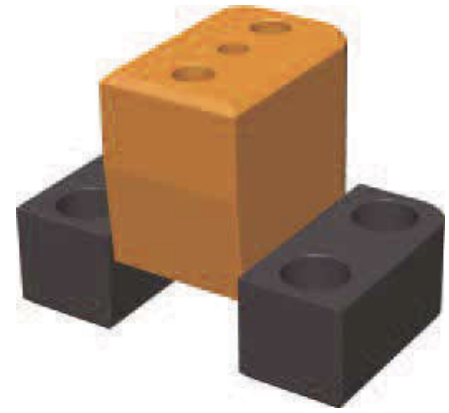
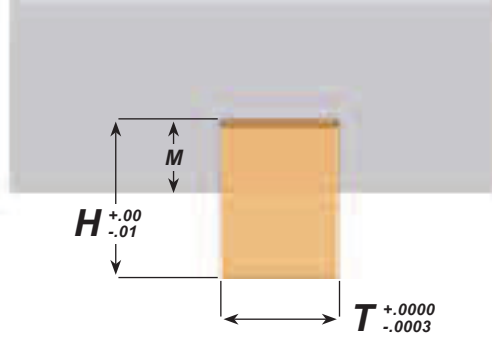
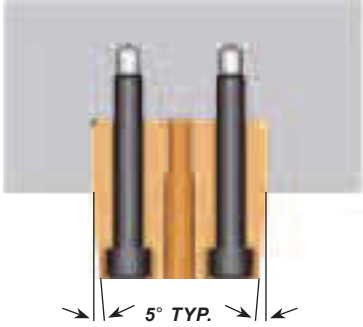


GUIDE LOCKS



INSTALLATION NOTES

Because Guide Locks can be used inside the mold as well as at the parting line, DMS has added a jack screw hole to the male interlock.

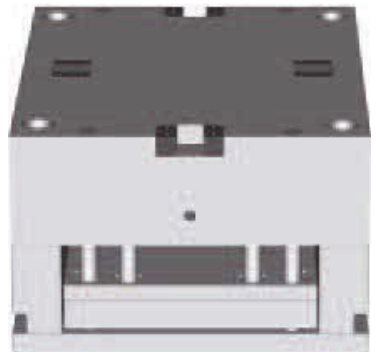
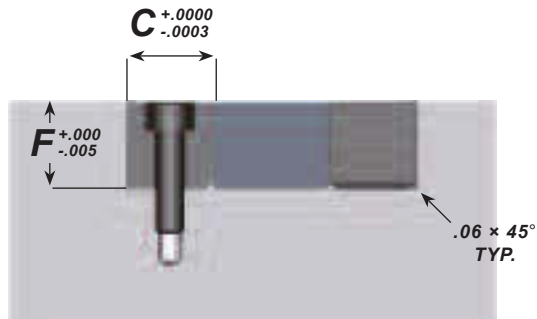
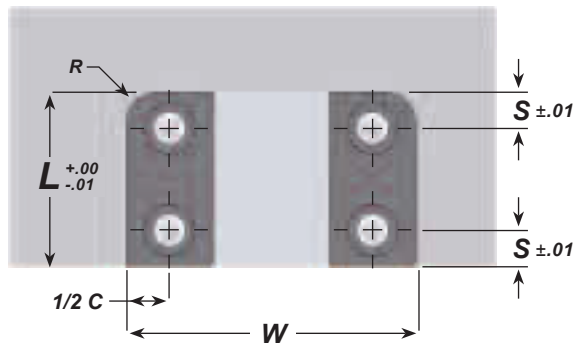
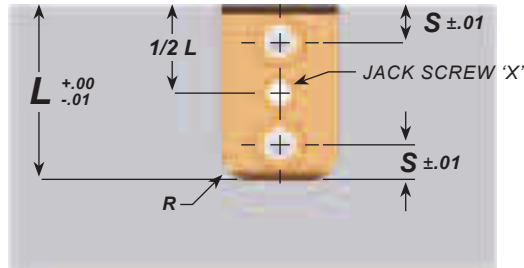
This allows removal without damage to the mold. Also added is a 5° angle on each end of the male.

Male:

- AISI D2 (58-60 Rc)
- Titanium Nitride Coated
- 78-80 Rc

Female:

- AISI 1045 (60-62 Rc)
- Black Oxide Finish



Cat No.	W +.000 -.010	L +.000 -.010	T +.0000 -.0003	H +.000 -.010	M	C +.0000 -.0003	F +.000 -.005	S +.010 -.010	R	X Jack Screw	SHCS	
											MALE (2)	FEMALE (4)
GL-1.5	1.500	1.000	0.500	0.850	0.375	0.500	0.500	0.250	0.187	#6-32	#10-32 X 1"	#10-32 X 5/8
GL-2.5	2.500	1.500	1.000	1.350	0.625	0.750	0.750	0.310	0.250	1/4-20	1/4-20 X 1-1/2	1/4-20 X 7/8
GL-3.5	3.500	2.000	1.500	1.730	0.750	1.000	1.000	0.440	0.375	3/8-16	3/8-16 X 2"	3/8-16 X 1-1/4
GL-4.5	4.500	2.500	2.000	2.100	0.875	1.250	1.250	0.560	0.500	3/8-16	1/2-13 X 2-1/4	1/2-13 X 1-1/2