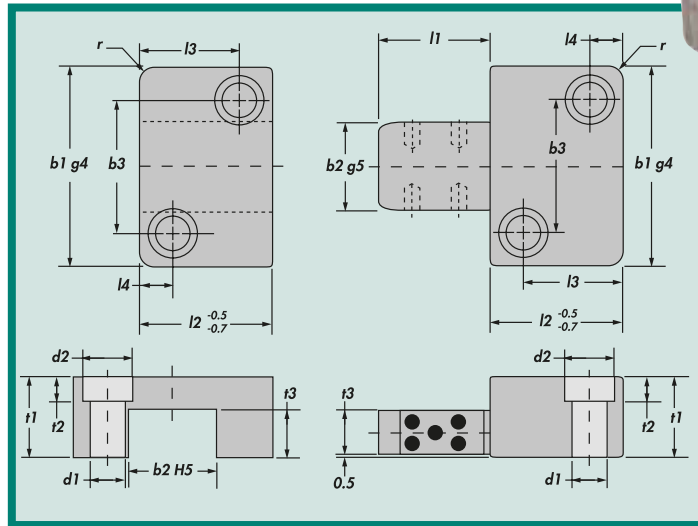
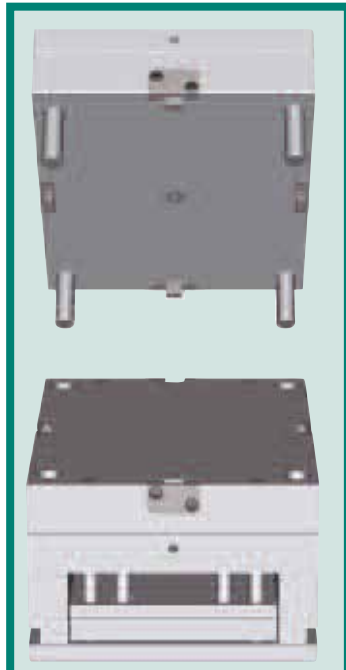




E Side Locks (Graphite Impregnated)

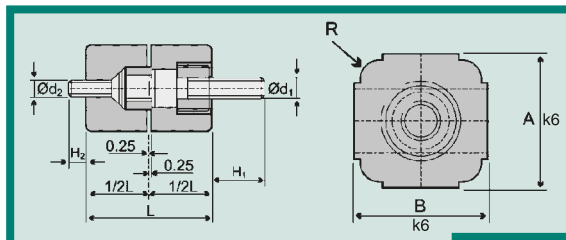


Material: YK30 56-60 Hrc

- Supplied with socket head cap screws.
- Sold in sets only.

| Catalog Number | b1 | b2 | l1 | l2 | t1 | t3 | d1 | d2 | t2 | b3 | l3 | l4 | r |
|----------------|-----|----|-----|----|----|----|-----|----|-----|----|----|----|----|
| OSL16x20 | 40 | 16 | 20 | 22 | 20 | 11 | 6.6 | 11 | 6.8 | 26 | 15 | 7 | 6 |
| OSL16x40 | 40 | 16 | 40 | 22 | 20 | 11 | 6.6 | 11 | 6.8 | 26 | 15 | 7 | 6 |
| OSL20x25 | 45 | 20 | 25 | 27 | 22 | 13 | 6.6 | 11 | 6.8 | 31 | 19 | 7 | 6 |
| OSL20x50 | 45 | 20 | 50 | 27 | 22 | 13 | 6.6 | 11 | 6.8 | 31 | 19 | 7 | 6 |
| OSL25x32 | 50 | 25 | 32 | 36 | 25 | 14 | 6.6 | 11 | 6.8 | 35 | 27 | 9 | 8 |
| OSL25x63 | 50 | 25 | 63 | 36 | 25 | 14 | 6.6 | 11 | 6.8 | 35 | 27 | 9 | 8 |
| OSL32x40 | 63 | 32 | 40 | 46 | 32 | 19 | 9 | 15 | 9 | 45 | 35 | 11 | 8 |
| OSL32x80 | 63 | 32 | 80 | 46 | 32 | 19 | 9 | 15 | 9 | 45 | 35 | 11 | 8 |
| OSL40x50 | 85 | 40 | 50 | 56 | 36 | 22 | 11 | 18 | 11 | 60 | 40 | 15 | 10 |
| OSL40x100 | 85 | 40 | 100 | 56 | 36 | 22 | 11 | 18 | 11 | 60 | 40 | 15 | 10 |
| OSL50x56 | 100 | 50 | 56 | 66 | 40 | 24 | 14 | 20 | 13 | 74 | 48 | 18 | 10 |
| OSL50x112 | 100 | 50 | 112 | 66 | 40 | 24 | 14 | 20 | 13 | 74 | 48 | 18 | 10 |

Note: All dimensions & tolerances are in millimeters



Square Interlocks

Material: YK30 56-60 Hrc

- Easily installed and removed from the parting line.
- Supplied with socket head cap screws.
- Sold in sets only.

| Catalog Number | A | B | L | d1 | d2 | H1 | H2 | R |
|----------------|----|----|----|-----|----|----|----|---|
| SIL-20 | 20 | 20 | 28 | M5 | M4 | 12 | 4 | 4 |
| SIL-25 | 25 | 25 | 32 | M6 | M5 | 13 | 8 | 5 |
| SIL-32 | 32 | 32 | 36 | M8 | M6 | 15 | 12 | 6 |
| SIL-40 | 40 | 40 | 45 | M10 | M8 | 17 | 10 | 6 |

Note: All dimensions & tolerances are in millimeters