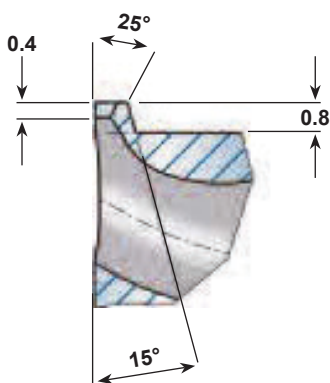
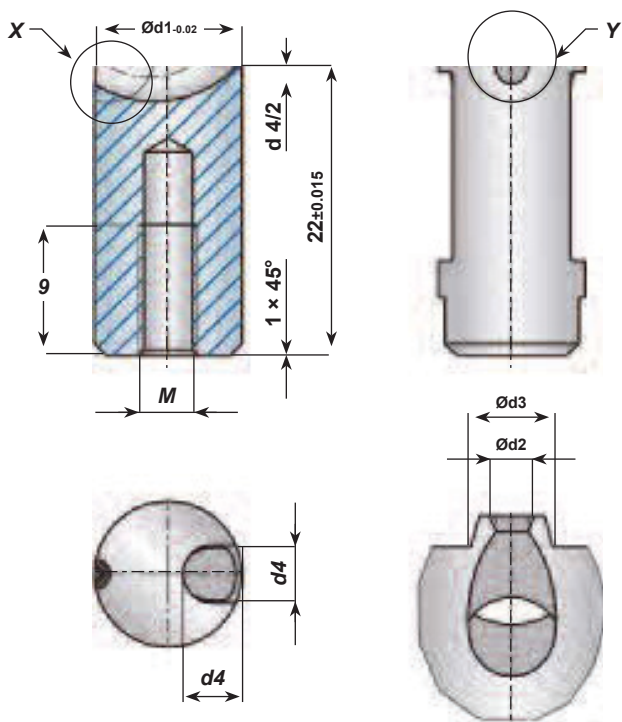


CASHEW GATE INSERTS

Ø 10mm — FOR SHOT WEIGHTS UP TO 40g

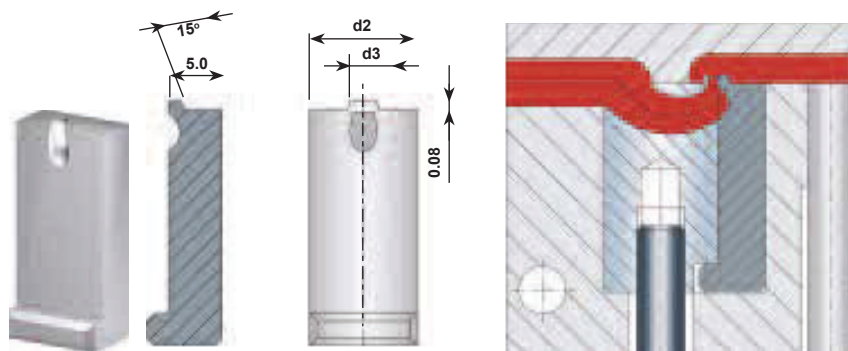


ACTUAL SIZE EXTERNAL VIEW CUTAWAY VIEW

- ▶ Manufactured in a solid one-piece unit using the Metal Injection Molding (MIM) process.
- ▶ Optimal balancing of cavity filling due to the exactness of MIM.
- ▶ Hardened to 60HRC and polished.
- ▶ Anti-rotation locking molded into all round inserts. However in most cases the insert is adequately held by the capscrew.

| Catalog Number | d1 | d2 | d3 | d4 | M | Viscosity | | |
|----------------|----|-----|-----|----|---|------------------|---------------------|-----------------|
| | | | | | | high flowability | regular flowability | low flowability |
| GTR-10-08 | 10 | 0,8 | 2,1 | 4 | 4 | 8 | 7 | 5 |
| GTR-10-10 | 10 | 1,0 | 2,3 | 4 | 4 | 14 | 12 | 9 |
| GTR-10-12 | 10 | 1,2 | 2,5 | 4 | 4 | 20 | 16 | 10 |
| GTR-10-14 | 10 | 1,4 | 2,7 | 4 | 4 | 30 | 23 | 15 |
| GTR-10-16 | 10 | 1,6 | 2,9 | 4 | 4 | 40 | 30 | 20 |
| | | | | | | Weight in grams | | |

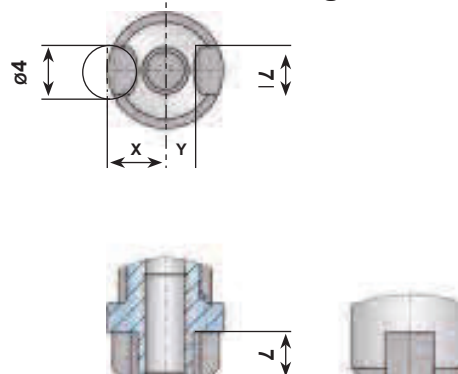
Technical Information:



Dead-End Recess Auxiliary Insert for GTE Series

A dead-end recess breaking the force of the melt flow can be machined either into an auxiliary insert or directly into the cavity. The auxiliary insert should be made from a highly wear-resistant steel with a hardness of 60HRC. The dimensions b2 and d3 depend on the size of the cashew gate insert selected. For recess geometries in various CAD formats please refer to the Exaflow website.

Anti-Rotation Locking Dimensions



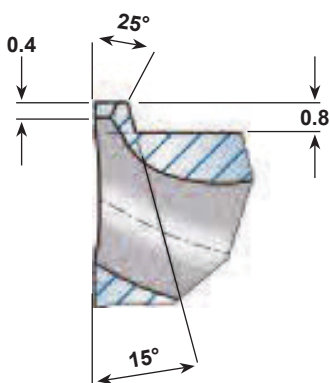
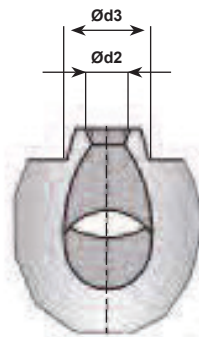
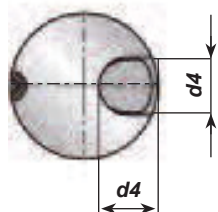
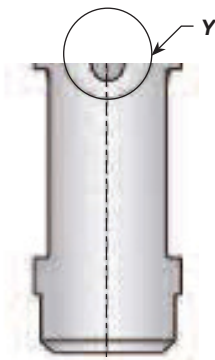
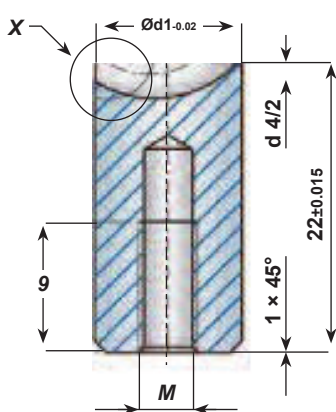
| Catalog Series | Parallel Pin distance 'X' | Key distance 'Y' |
|----------------|---------------------------|------------------|
| GTR-10 | 4,5 mm | 3,0 mm |

CAD files available at:
www.extraflow.com



CASHEW GATE INSERTS

Ø 12mm — FOR SHOT WEIGHTS UP TO 68g



ACTUAL SIZE



EXTERNAL VIEW

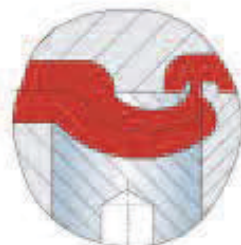
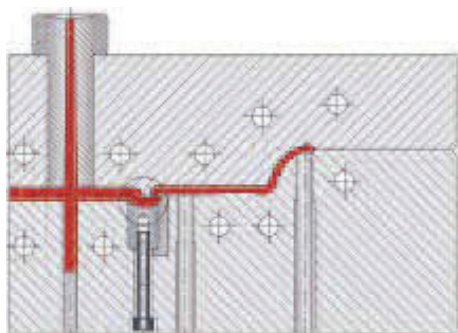


CUTAWAY VIEW

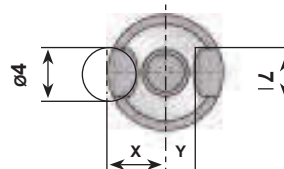
- > Manufactured in a solid one-piece unit using the Metal Injection Molding (MIM) process.
- > Optimal balancing of cavity filling due to the exactness of MIM.
- > Hardened to 60HRC and polished.
- > Anti-rotation locking molded into all round inserts. However in most cases the insert is adequately held by the capscrew.

| Catalog Number | d1 | d2 | d3 | d4 | M | Viscosity | | |
|----------------|----|-----|-----|----|---|------------------|---------------------|-----------------|
| | | | | | | high flowability | regular flowability | low flowability |
| GTR-12-08 | 12 | 0,8 | 2,1 | 5 | 5 | 8 | 7 | 5 |
| GTR-12-10 | 12 | 1,0 | 2,3 | 5 | 5 | 14 | 12 | 9 |
| GTR-12-12 | 12 | 1,2 | 2,5 | 5 | 5 | 20 | 16 | 10 |
| GTR-12-14 | 12 | 1,4 | 2,7 | 5 | 5 | 30 | 23 | 15 |
| GTR-12-16 | 12 | 1,6 | 2,9 | 5 | 5 | 40 | 30 | 20 |
| GTR-12-18 | 12 | 1,8 | 3,1 | 5 | 5 | 54 | 40 | 27 |
| GTR-12-20 | 12 | 2,0 | 3,3 | 5 | 5 | 68 | 52 | 34 |
| | | | | | | Weight in grams | | |

Installation Example



Anti-Rotation Locking Dimensions



Flat Parts

The front of the cashew gate insert is fully sealed off by a companion raised lip (calotte) machined into the dead-end insert.

- > to reduce pressure loss
- > to minimize shear

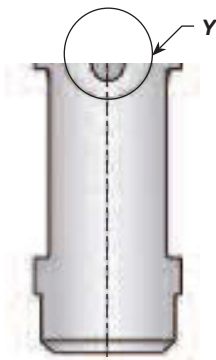
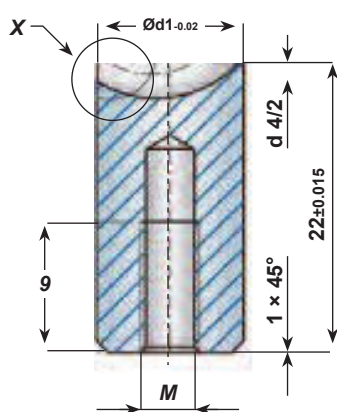
| Catalog Series | Parallel Pin distance 'X' | Key distance 'Y' |
|----------------|---------------------------|------------------|
| GTR-12 | 5,2 mm | 3,8 mm |

CAD files available at:
www.extraflow.com



CASHEW GATE INSERTS

Ø 14mm — FOR SHOT WEIGHTS UP TO 100g

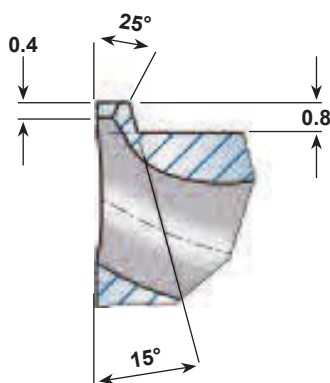
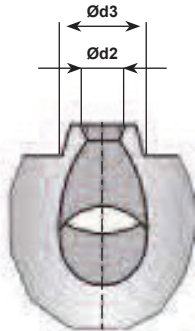
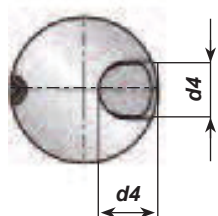


ACTUAL SIZE

EXTERNAL VIEW

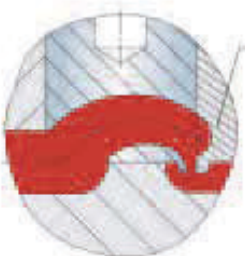
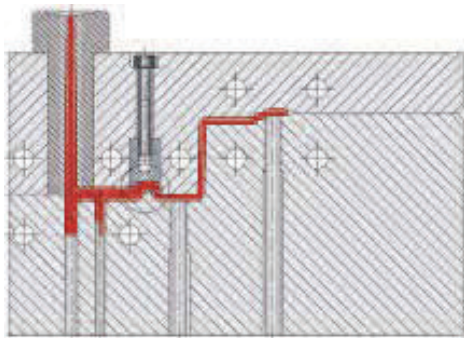
CUTAWAY VIEW

- ▶ Manufactured in a solid one-piece unit using the Metal Injection Molding (MIM) process.
- ▶ Optimal balancing of cavity filling due to the exactness of MIM.
- ▶ Hardened to 60HRC and polished.
- ▶ Anti-rotation locking molded into all round inserts. However in most cases the insert is adequately held by the capscrew.

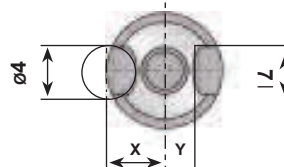


| Catalog Number | d1 | d2 | d3 | d4 | M | Viscosity | | |
|----------------|----|-----|-----|----|---|------------------|---------------------|-----------------|
| | | | | | | high flowability | regular flowability | low flowability |
| GTR-14-12 | 14 | 1,2 | 2,5 | 6 | 6 | 20 | 16 | 10 |
| GTR-14-14 | 14 | 1,4 | 2,7 | 6 | 6 | 30 | 23 | 15 |
| GTR-14-16 | 14 | 1,6 | 2,9 | 6 | 6 | 40 | 30 | 20 |
| GTR-14-18 | 14 | 1,8 | 3,1 | 6 | 6 | 54 | 40 | 27 |
| GTR-14-20 | 14 | 2,0 | 3,3 | 6 | 6 | 68 | 52 | 34 |
| GTR-14-22 | 14 | 2,2 | 3,5 | 6 | 6 | 85 | 65 | 43 |
| GTR-14-24 | 14 | 2,4 | 3,7 | 6 | 6 | 100 | 80 | 50 |
| | | | | | | Weight in grams | | |

Installation Example



Anti-Rotation Locking Dimensions



Nozzle Side Installation

The cashew gate insert is screwed into the nozzle side of the mold. The front of the gate insert is sealed off by the cavity.

- ▶ to reduce pressure loss
- ▶ to minimize shear

| Catalog Series | Parallel Pin distance 'X' | Key distance 'Y' |
|----------------|---------------------------|------------------|
| GTR-14 | 6,0 mm | 4,5 mm |

CAD files available at:
www.extraflow.com