



E SIDE LOCKS

TREATED

Male half: YK 30 (58 ±2 Hrc)

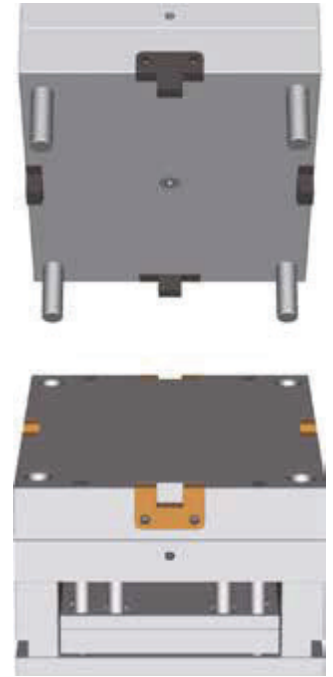
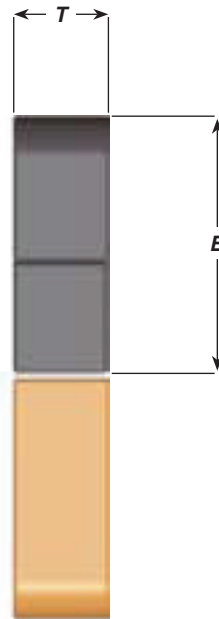
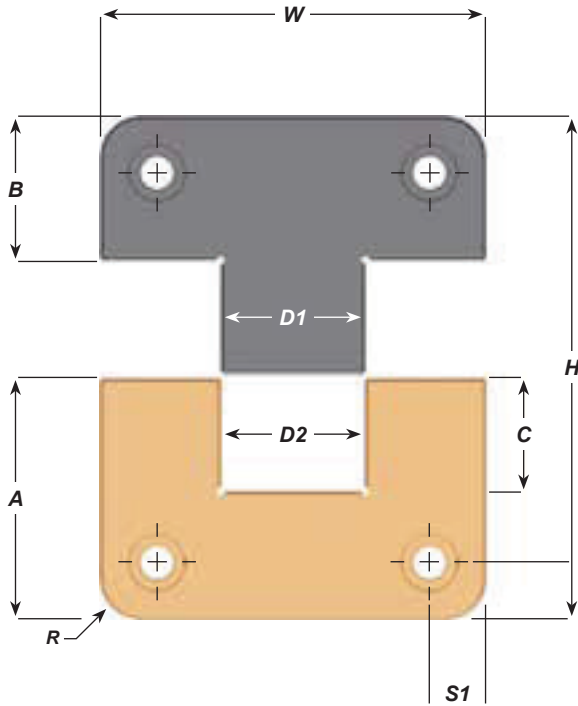
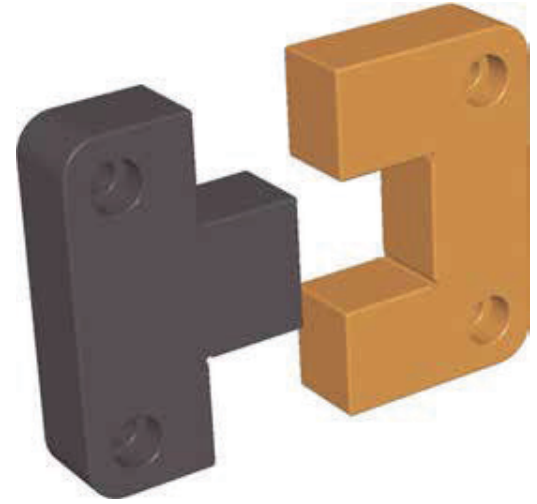
Black Oxide Finish

Female half: A2 Core 58-60 Surface (80 ±2 Hrc)

Titanium Nitride Coated

➤ Supplied with socket head cap screws.

➤ Sold in sets only.



Catalog Number	W +.0000 -.0004	T +.000 -.002	A +.000 -.002	B +.000 +.002	C	D1 +.0000 -.0002	D2 +.0002 -.0000	H +.002 -.004	R	S1/S2 +.01 -.01	SHCS
ESLT-100	1.000	0.375	1.125	0.875	0.530	0.500	0.500	2.000	0.187	0.250	10-32x 1/2
ESLT-125	1.250	0.490	1.125	0.875	0.660	0.500	0.500	2.000	0.187	0.250	8/32 x 5/8
ESLT-150	1.500	0.500	0.875	0.875	0.560	0.563	0.563	1.750	0.187	0.250	8/32 x 5/8
ESLT-200	2.000	0.500	1.375	0.875	0.660	0.750	0.750	2.250	0.187	0.312	10-32 x 1/2
ESLT-300	3.000	0.750	1.875	0.875	1.130	1.250	1.250	2.750	0.250	0.375	1/4-20 x 3/4
ESLT-400	4.000	1.000	2.375	1.375	1.250	1.500	1.500	3.750	0.500	0.500	3/8-16 x 1
ESLT-500	5.000	1.250	2.875	1.375	1.630	2.000	2.000	4.250	0.500	0.625	1/2-13 x 1-1/4
ESLT-600	6.000	1.500	2.875	1.375	1.750	2.500	2.500	4.250	0.500	0.625	1/2-13 x 1-1/2