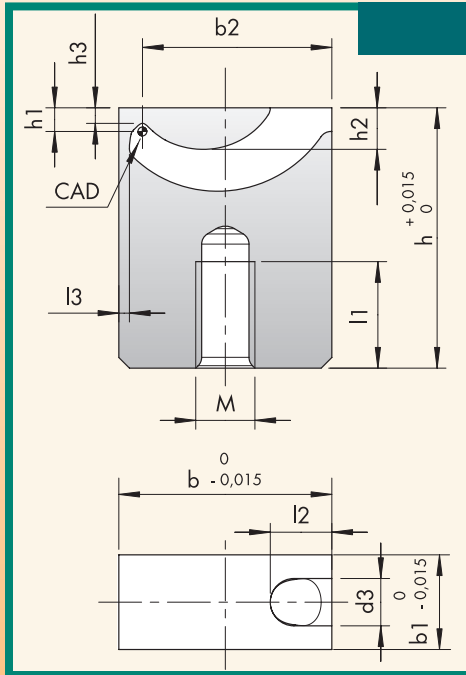




# Cashew Gate Inserts

## Contourable

- For contouring up to 10mm
- Individually adjustable
- Available in 2 degrees of hardness (60 HRC / 40 HRC)



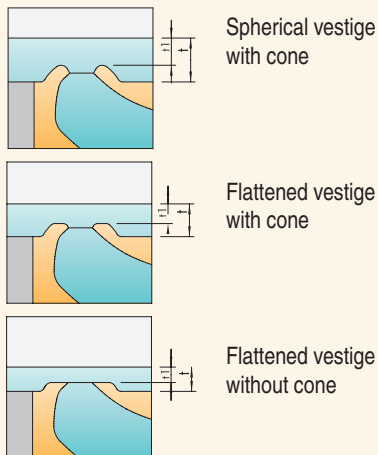
### TGC

	TGC-XS	TGC-S	TGC-1	TGC-2	TGC-3	TGC-4
<b>MAX. CONTOUR DEPTH</b>	1	2	2	3	5	10
<b>GATE POINT</b>	0,4-0,6	0,4 - 0,8	0,6 - 1,2	0,8 - 1,8	0,5x4,5 - 1,5x5,5	0,5x4,5 - 1,5x5,5
<b>RUNNER</b>	2.5	2.5	4	6	8	8
<b>MAXIMUM SHOT WEIGHT</b>						
<b>NV</b>	5	12	35	120	1000	1000
<b>MV</b>	4	7	25	75	500	500
<b>HV</b>	3	5	15	50	300	300

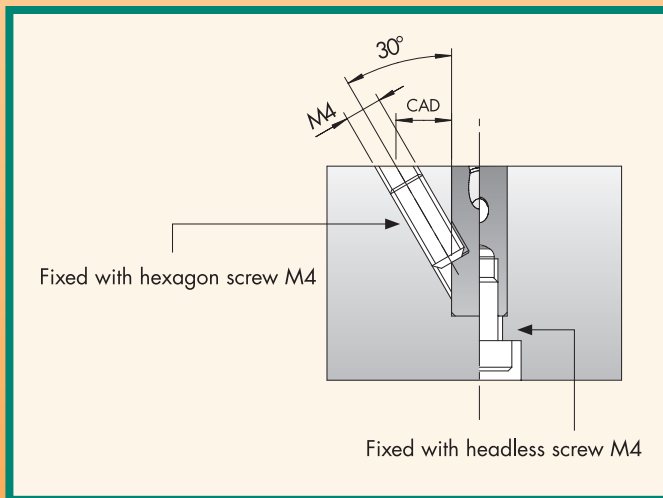
NV = low viscosity / MV = medium viscosity / HV = high viscosity

### Vestige Versions

$t1 > t/2$  (t = wall thickness of plastic part)



### TGC-XS / TGC-S Mounting Possibilities



Actual Size

• TGC1

• Cutaway View



Cat. No.	b	b1	b2	d3	h	h1	h2	h3	l1	l2	l3	M	HRC
TGC-XS	10	5	8.5	2.5	12	1	1.9	0.6	5	3.2	0.7	4	Version U = 40 HRC Version H = 60 HRC
TGC-S	15	6	13.3	2.5	18	2	3.5	1.5	8	4	0.9	4	
TGC-1	18	8	16	4	22	2	3.5	1.3	9	5.2	0.9	5	
TGC-2	25	10	22.1	6	22	3	4.8	2.1	8	6.5	1.2	5	
TGC-3	30	12	26.9	8	27	5	7.5	4.1	9	7	1.2	6	
TGC-4	45	12	41.2	8	36	10	16.7	9.1	8	9.6	1.8	6	

CAD files available at:



To order — Cat. No.-HRC. Example: TGC-S-U



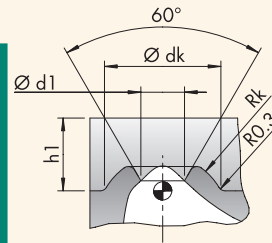
# Cashew Gate Inserts

## Contourable

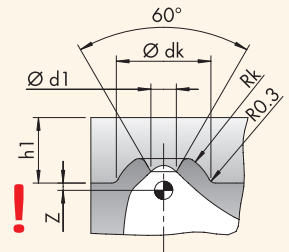
### Vestiges — TGC-XS / -S / -1 / -2

Cat. No.	Vestige	h1	d1 max.	dk	Rk	Z
TGC-XS	Standard	1.0	0.6	2.5	1.6	-
TGC-S	Standard	2.0	0.8	2.7	1.7	-
TGC-1	Small	1.8	0.7	2.6	1.4	0.2
	Standard	2.0	1.2	3.5	1.	-
TGC-2	Small	2.75	1.2	3.5	2.0	0.25
	Standard	3.0	1.8	4.5	2.6	-

#### Standard Lip Design



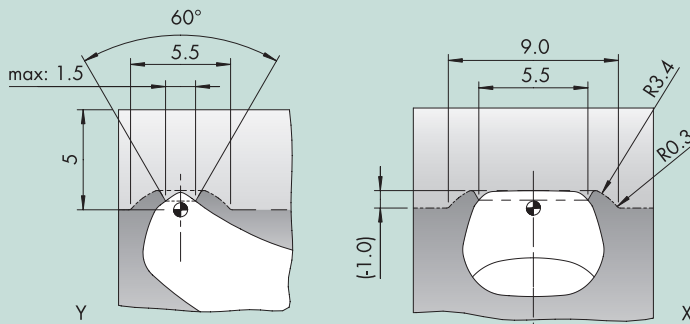
#### Small Lip Design



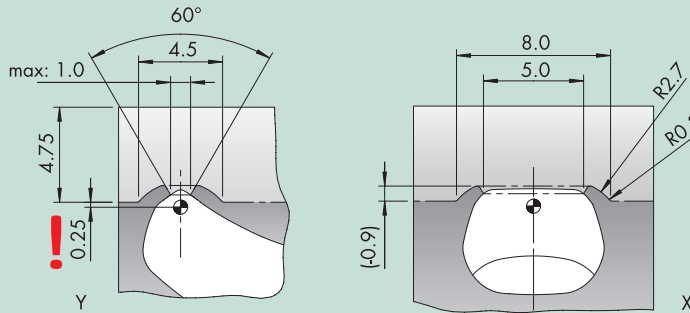
! - Maintain offset Z from CAD reference point

### Vestiges — TGC-3 / -4

#### Standard Lip Design

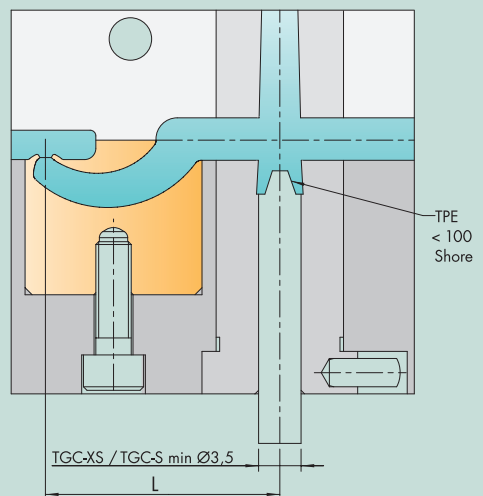
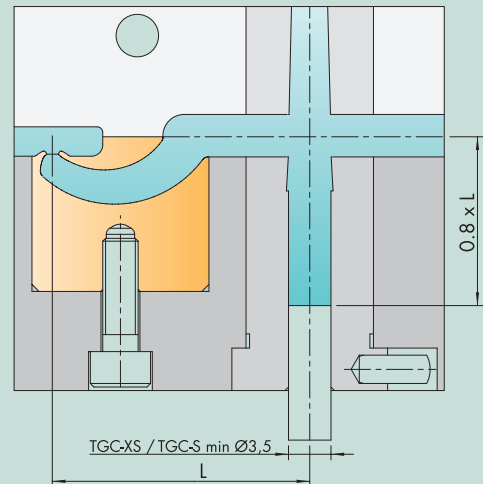


#### Small Lip Design



#### Thermoplastic elastomers (TPE)

- Low Shore hardness = shorter distance L
- Use centring pin
- Max. hardness 100 Shore A



#### Table for distance L

Catalog Number	Material Type			
	TPE, TPU, etc.	PE, PP, PET etc.	PC/ABS, PA, POM, HI-PC, etc.	PA+GF, PC, SAN, PMMA, etc.
TGC-XS	12-16	13-20	16-23	22-29
TGC-S	16-21	18-25	21-28	27-34
TGC-1	21-26	26-34	31-39	36-45
TGC-2	28-33	31-39	36-44	41-50
TGC3	33-38	38-48	43-53	48-58
TGC-4	48-53	53-63	58-68	?